



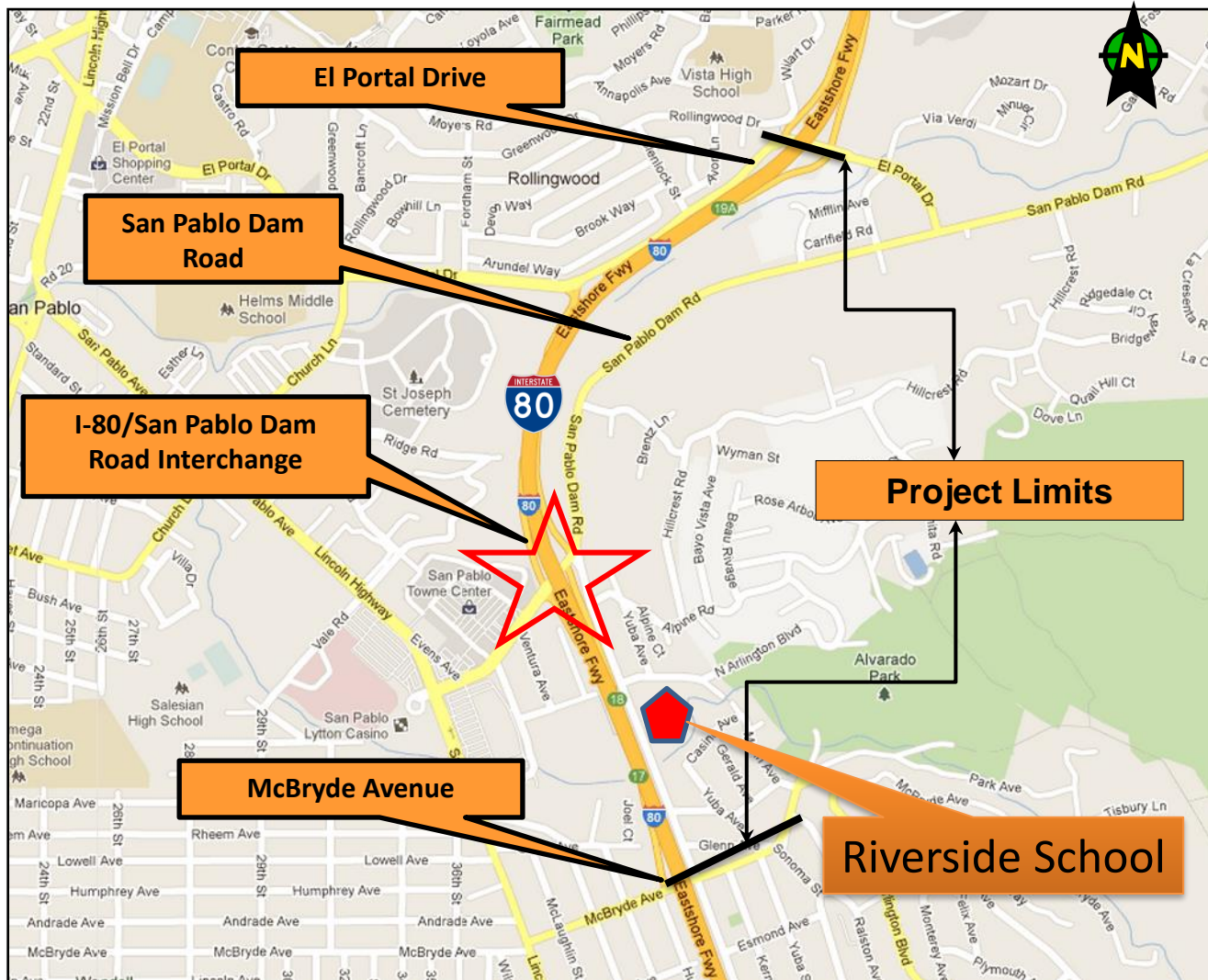
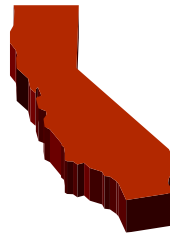
I-80 San Pablo Dam Road Interchange Improvements Project

Major Interchange Modifications at I-80 and San Pablo Dam Road, McBryde Avenue and El Portal Drive

Project Background

2004:	Voters Passed Measure J (included funding for Project)
2006:	Project Initiated
2010:	Environmental Document Approved
2011:	Project Design Started
2013:	Project Split into Two Phases
2015:	Utility Relocation work on El Portal Drive Started
2016:	Construction of Phase 1 Started
2017:	Phase 1 Construction Completed
2018 – 2021:	Phase 2 On Hold until Funding Secured Phase 1 Close Out Activities concluded
2022:	Caltrans agrees to nominate Phase 2 for SB1 funding

Project Location



Major Interchange Modifications at I-80 and San Pablo Dam Road, McBryde Avenue and El Portal Drive

Why Do Need the Project?

Major Interchange Modifications at I-80 and San Pablo Dam Road, McBryde Avenue and El Portal Drive



Congestion on SPDR, Spillover Impacts



EB Traffic near Denny's



WB Traffic at Amador St

Major Interchange Modifications at I-80 and San Pablo Dam Road, McBryde Avenue and El Portal Drive

Safety Issues

Height of SPDR OC (14'-8" Clearance)

Standard Clearance = 16'-6"



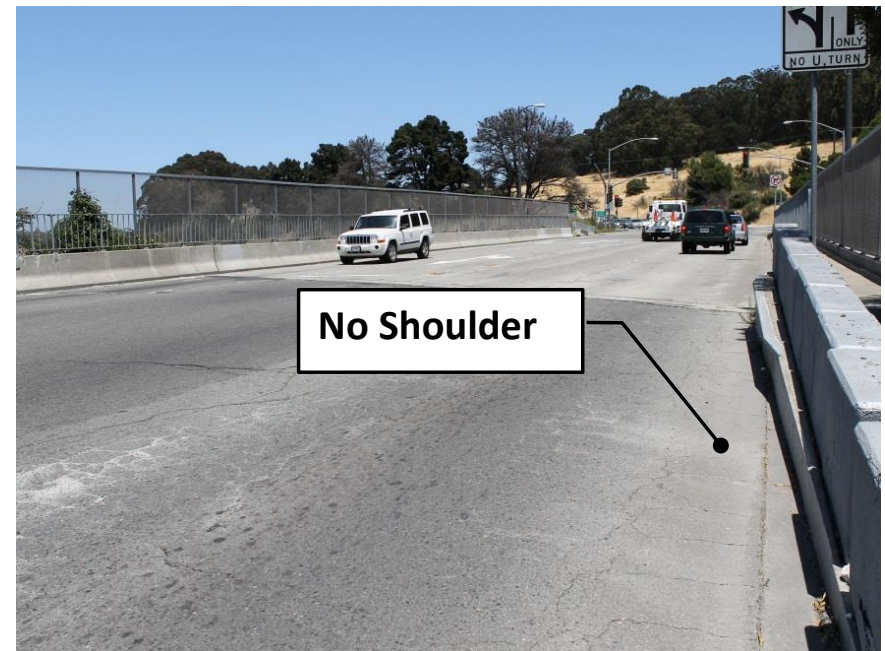
Major Interchange Modifications at I-80 and San Pablo Dam Road, McBryde Avenue and El Portal Drive

Safety Issues

Narrow/No Shoulders



EB I-80



SPDR OC

Major Interchange Modifications at I-80 and San Pablo Dam Road, McBryde Avenue and El Portal Drive

Safety Issues



an killed Sunday morning in a collision on Interstate 80 in San Pablo has been identified as an El Cerrito police officer.

an killed Sunday morning in a collision on eastbound Interstate 80 in San Pablo has been identified as El Cerrito police Officer Jerick Bernstine, according to the Contra Costa County coroner and police on Monday.

RESCUE ATTEMPT: Good
scue Driver From Fiery I-80



I-80 in CC: 3rd deadliest Corridor in CA

Major Interchange Modifications at I-80 and San Pablo Dam Road, McBryde Avenue and El Portal Drive

Safety Issues

Narrow/No Sidewalks

Narrow Sidewalk
(Width = 4'-0")



Standard Sidewalk Width = 6'-0" (Minimum)

No Sidewalk



SPDR OC

Amador St

Major Interchange Modifications at I-80 and San Pablo Dam Road, McBryde Avenue and El Portal Drive

Safety Issues

Pedestrian OC Does Not Cross Amador St

- **50%** of students live across I-80
- **283+** crossings per day
- **90%+** of observed crossings start and/or end in school

Riverside
Elementary
School



Major Interchange Modifications at I-80 and San Pablo Dam Road, McBryde Avenue and El Portal Drive

Safety Issues

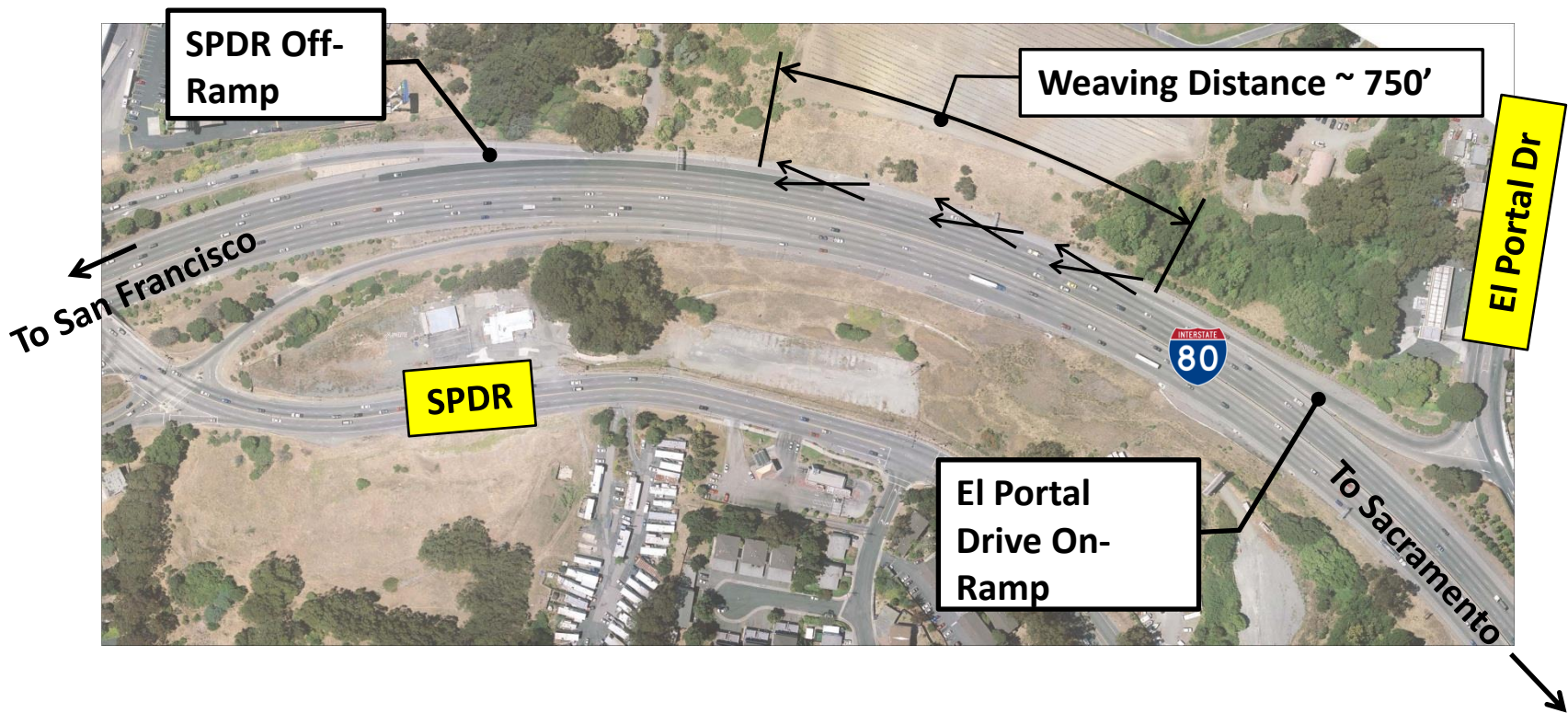
Left Turn Yield from El Portal Dr to WB I-80



Major Interchange Modifications at I-80 and San Pablo Dam Road, McBryde Avenue and El Portal Drive

Safety Issues

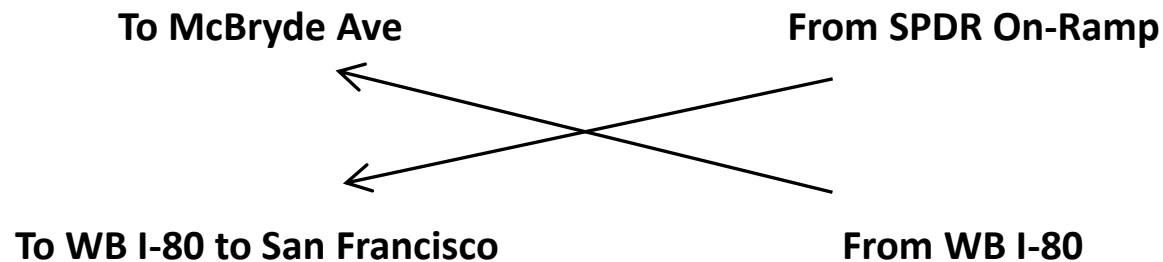
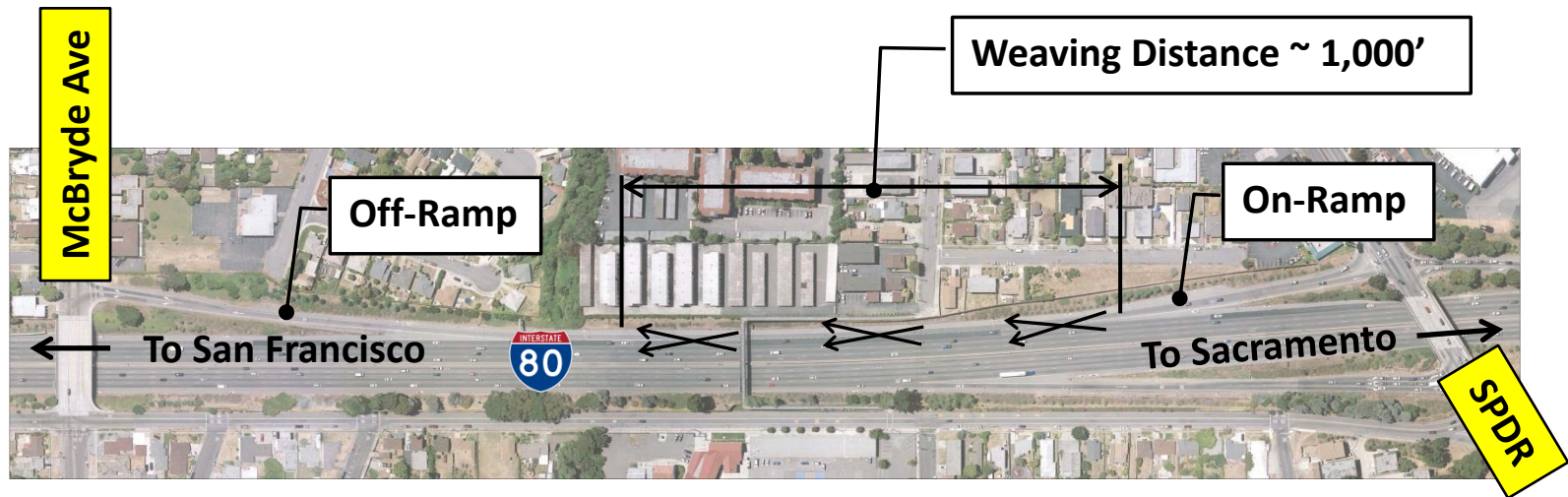
Short Weaving Distance Between El Portal Dr and SPDR



Major Interchange Modifications at I-80 and San Pablo Dam Road, McBryde Avenue and El Portal Drive

Safety Issues

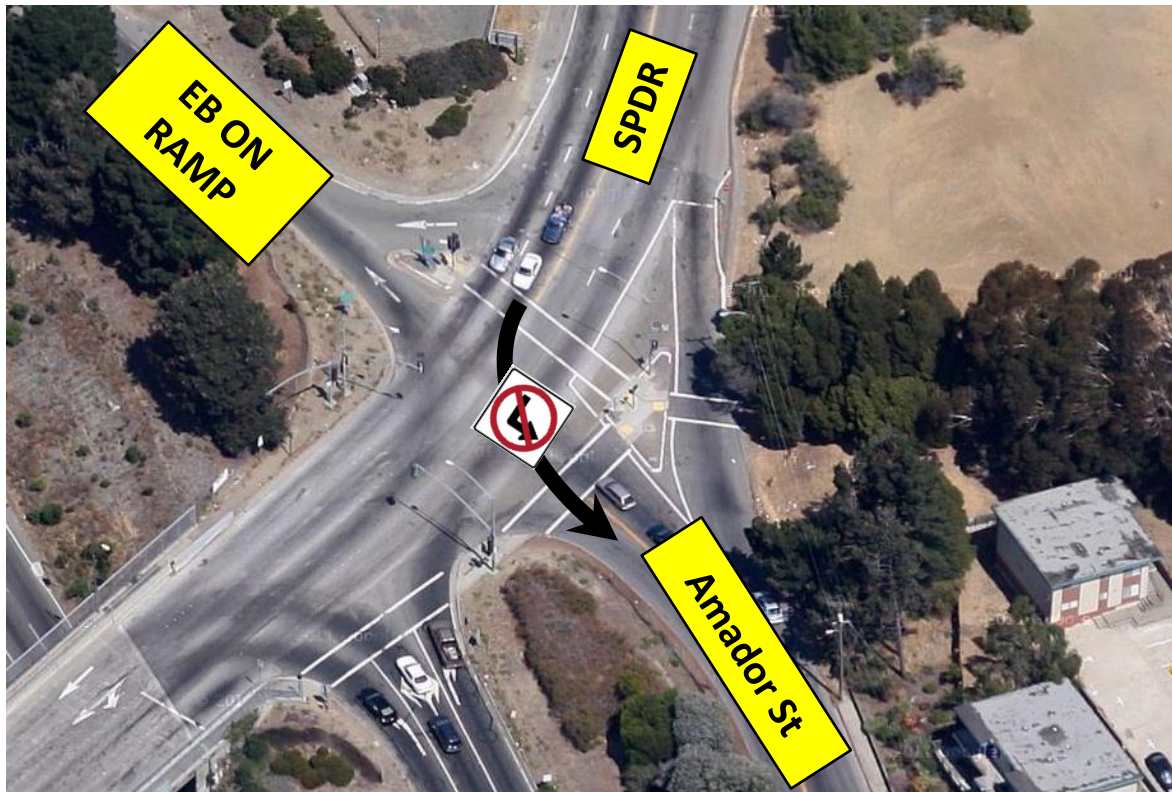
Short Weaving Distance Between SPDR & McBryde Ave



Major Interchange Modifications at I-80 and San Pablo Dam Road, McBryde Avenue and El Portal Drive

Access Issues

No Left Turn Allowed onto Amador St



Major Interchange Modifications at I-80 and San Pablo Dam Road, McBryde Avenue and El Portal Drive

PROJECT DETAILS

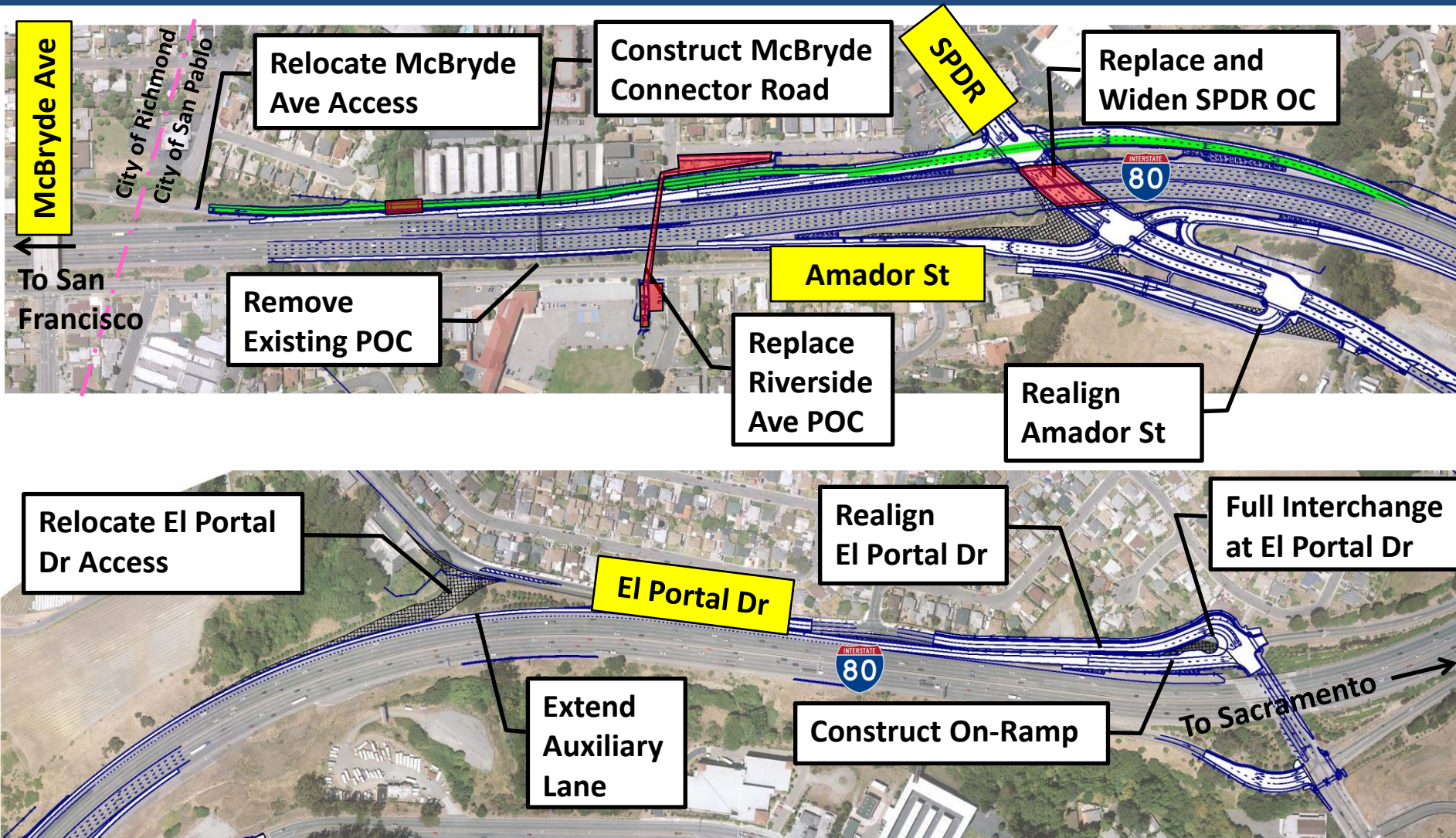
Major Interchange Modifications at I-80 and San Pablo Dam Road, McBryde Avenue and El Portal Drive



Project Goals

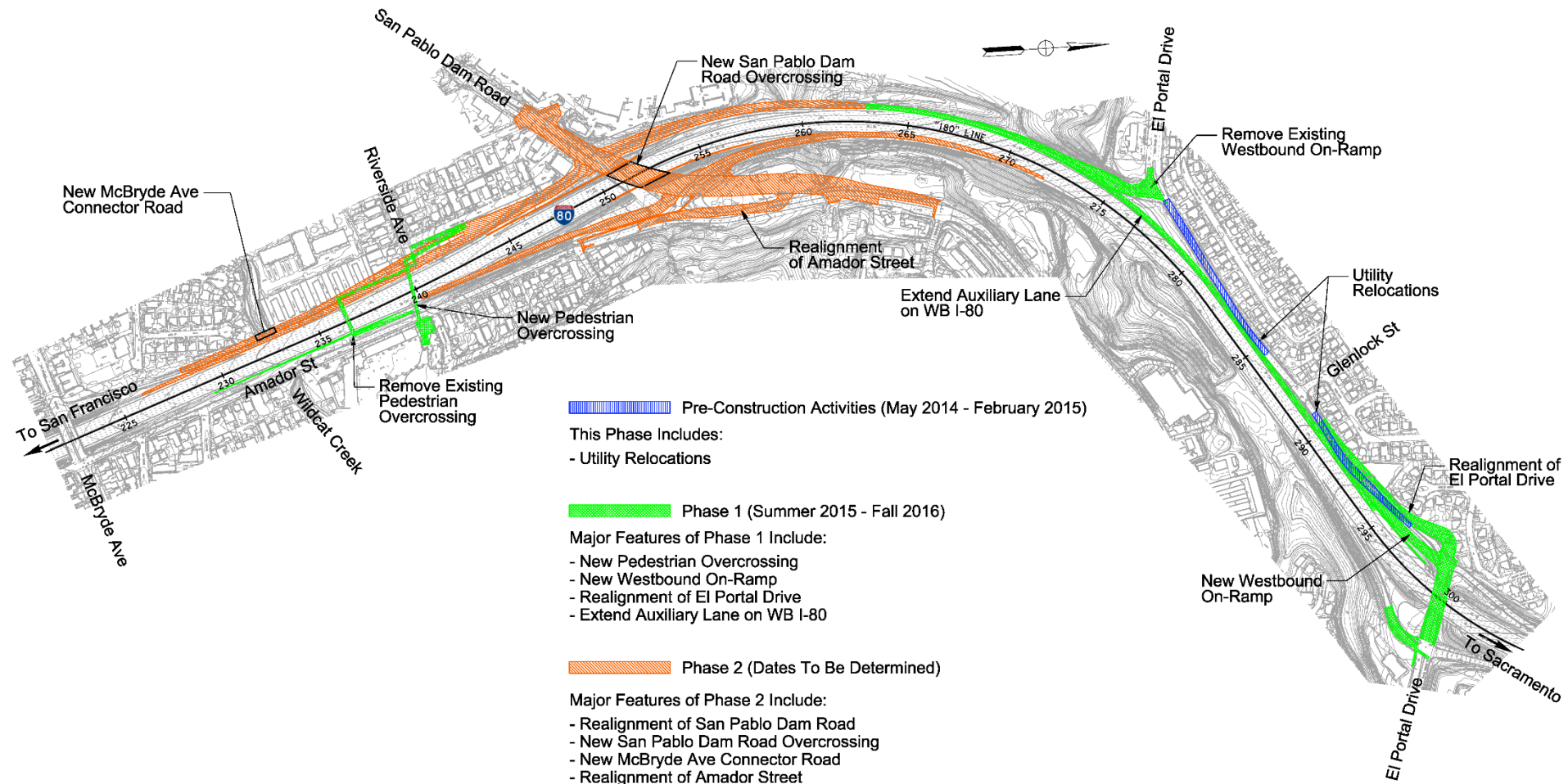
- **Reduce Traffic Congestion at the I-80/SPDR Interchange**
- **Improve Safety and Access to, from and on I-80**
- **Provide Safe and Efficient Pedestrian Access across I-80**
- **Accommodate Future Traffic Volumes**
- **Provide Better Access to Amador St**

Project Features & Benefits



Major Interchange Modifications at I-80 and San Pablo Dam Road, McBryde Avenue and El Portal Drive

Project Phasing



Major Interchange Modifications at I-80 and San Pablo Dam Road, McBryde Avenue and El Portal Drive

Project Cost / Funding

Phase 1 Project Cost

\$42 M

Funding:

- | | | |
|----|--|------|
| 1. | Countywide ½ cent Transportation Sales Tax (Measure J) | \$13 |
| 2. | City of San Pablo | \$3 |
| 3. | State (STIP) | \$15 |
| 4. | Active Transportation Program | \$2 |
| 5. | Regional (Bridge Tolls) | \$8 |
| 6. | WCCTAC fees | \$1 |

\$42 M

Project Cost / Funding

Phase 2 Project Cost:

Design:	\$ 5
Right of Way:	\$ 19
Construction (to be updated during design):	\$ 64

Funding:

1. State SB1 TCEP (Proposed for PS&E)	\$ 5
2. State SB 1 TCEP (Proposed for R/W)	\$ 19
3. WCCTAC Fees (Proposed)	\$ 0.5
4. TBD (Shortfall)	\$ 63.5 +
	\$88 M +

Completed Work

After

Before

Major Interchange Modifications at I-80 and San Pablo Dam Road, McBryde Avenue and El Portal Drive

Completed Work

After



Major Interchange Modifications at I-80 and San Pablo Dam Road, McBryde Avenue and El Portal Drive

Completed Work

Before



After

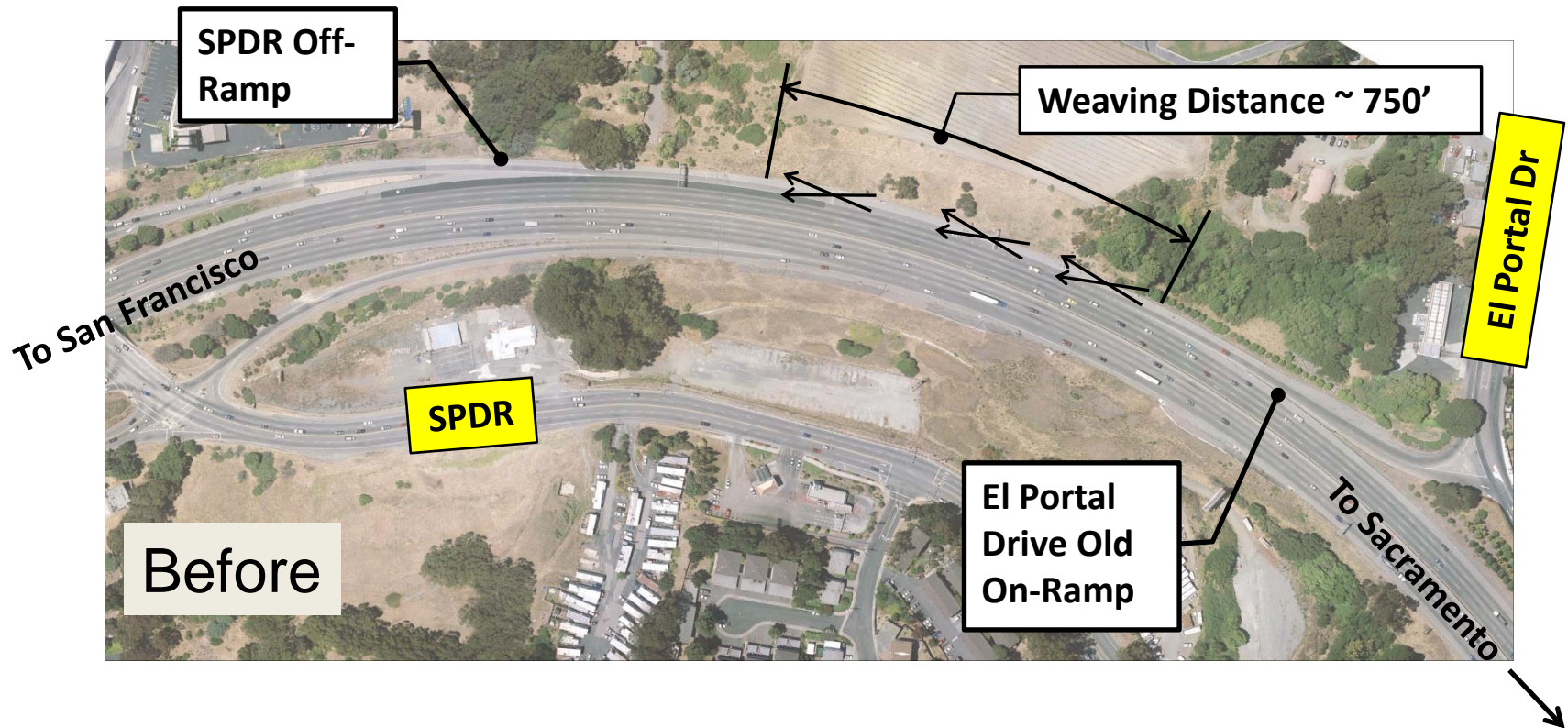


After



Major Interchange Modifications at I-80 and San Pablo Dam Road, McBryde Avenue and El Portal Drive

Completed Work



Major Interchange Modifications at I-80 and San Pablo Dam Road, McBryde Avenue and El Portal Drive

Completed Work



Major Interchange Modifications at I-80 and San Pablo Dam Road, McBryde Avenue and El Portal Drive

Completed Work

Before



After



Major Interchange Modifications at I-80 and San Pablo Dam Road, McBryde Avenue and El Portal Drive

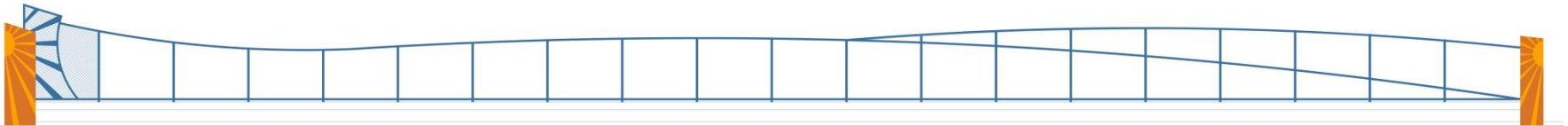
Project Phasing

<https://ccta.net/projects/san-pablo-dam-road-i-80-interchange-improvement-project/>



Major Interchange Modifications at I-80 and San Pablo Dam Road, McBryde Avenue and El Portal Drive

Thank You



Major Interchange Modifications at I-80 and San Pablo Dam Road, McBryde Avenue and El Portal Drive