



El Cerrito BART Stations: Capital Projects

WCCTAC Board Meeting

September 17, 2021



El Cerrito Del Norte Station Modernization – Project Overview

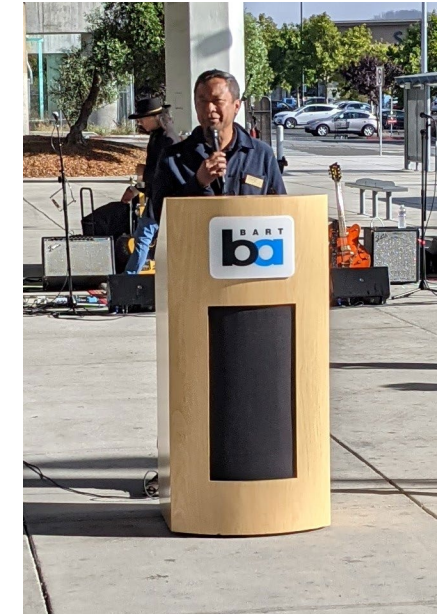
- Modernization began in 2017 and cost approximately \$70M
- Funding Sources Included:
 - WCCTAC STMP
 - CCTA Measure J
 - CA Prop 1B
 - BART Measure RR
 - BART Capital Allocation
- Station Modernization project was completed in March of 2021
- Community celebration was held on September 10



External view of fare gates



New Stairs



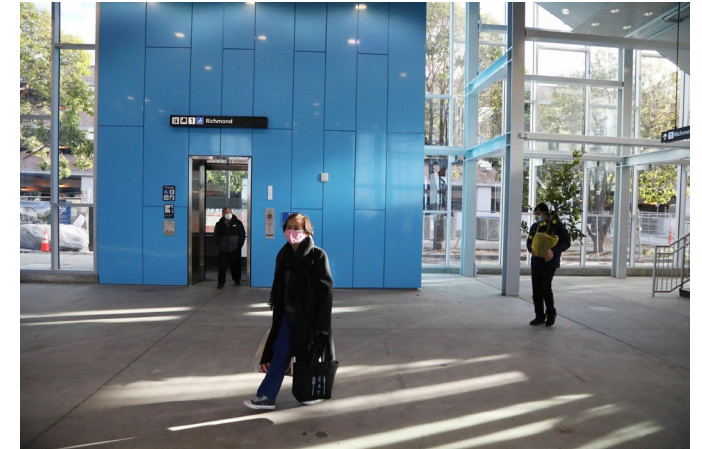
*Hon. Gabriel Quinto
City of El Cerrito*

El Cerrito Del Norte Station Modernization – Station Improvements

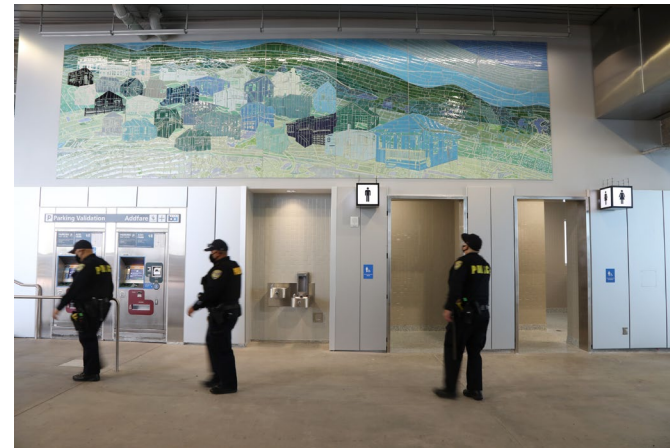
1. Expanded paid area
2. 2 new elevators
3. 2 new stairs
4. New bathrooms
5. New architectural floors, ceiling, LED lighting
6. New fire alarm
7. Expanded ADA improvements throughout the Station
8. New artwork by local artist



Expanded Paid Station Area



New Elevator



New Artwork by Kyungmi Shin

El Cerrito Del Norte Station Modernization – External Improvements

1. Expanded Ohlone Greenway
2. Relocated pick-up/drop off to avoid conflicts with pedestrians & cyclists
3. 18 new bus shelters and associated amenities
4. New pavement along the southern concourse area
5. New pedestrian seating
6. New LED lights



External station view



New bus shelters

Ongoing Capital Investments

Elevator Modernization Program

- **\$350 million** program
- Will modernize **130 elevators** through the BART system
 - **53 have been identified for immediate modernization**
- BART Elevators are subject to **much harsher conditions** than typically seen in the industry
- **Priority project for BART** and the accessibility community
- Does not compete well in TCP Program or other competitive funding programs



New Elevator – El Cerrito Del Norte



New Gate - Richmond

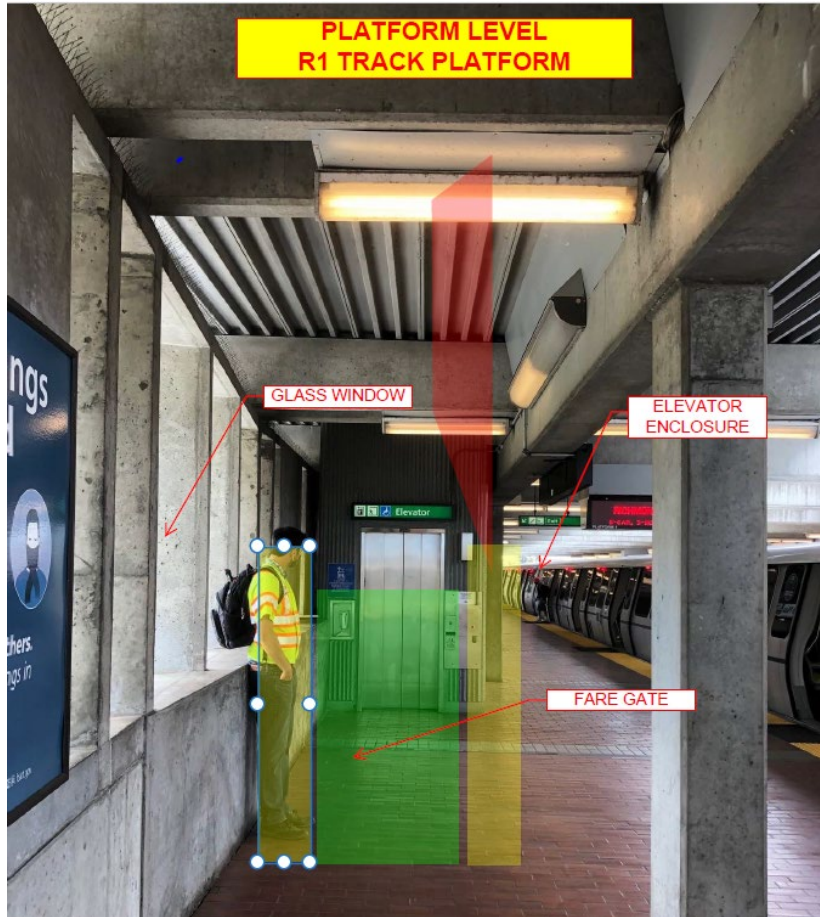
Next Generation Fare Gates

Next Generation Fare Gates Systemwide = \$90M

County/Segment	Total # of Fare Gates	% of Total	Total Cost (\$M)	Estimated County Contribution (\$M)	Estimated BART Contribution (\$M)
Alameda (ex. 580 Corr.)	243	34%	\$ 30.6	\$ 15.3	\$ 15.3
580 Corridor	34	5%	4.3	4.3	-
Contra Costa	117	16%	14.7	7.4	7.4
San Francisco (incl. SFO)	199	28%	25.0	12.5	12.5
San Mateo (excl. SFO)	82	11%	10.3	10.3	-
Santa Clara	40	6%	5.0	5.0	-
Total	715		\$ 90.0	\$ 54.8	\$ 35.2

- 26 of 117 fare gates in Contra Costa are located at El Cerrito Stations
- Total Cost to replace fare gates in El Cerrito: \$3.3M (\$1.5M EC + \$1.8M ECDN)
- \$1M AHSC grant pending for Del Norte (notification expected in October)
- El Cerrito Plaza awarded \$750K WCCTAC STMP grant (including \$450K for NGFG)

El Cerrito Plaza Elevator Accessible Fare Gate (AFG) and Elevator Enclosure



Future AFG/Elevator @ El Cerrito



Similar BART AFG/Elevator

Project Description/Status:

- Install Metal Enclosures and AFG at 2 Elevator Entrances in Concourse Level
- Project currently in Final Design
- Forecast to open Q2 2022

Funding provided by:

- WCCTAC STMP
- BART Capital Allocation

